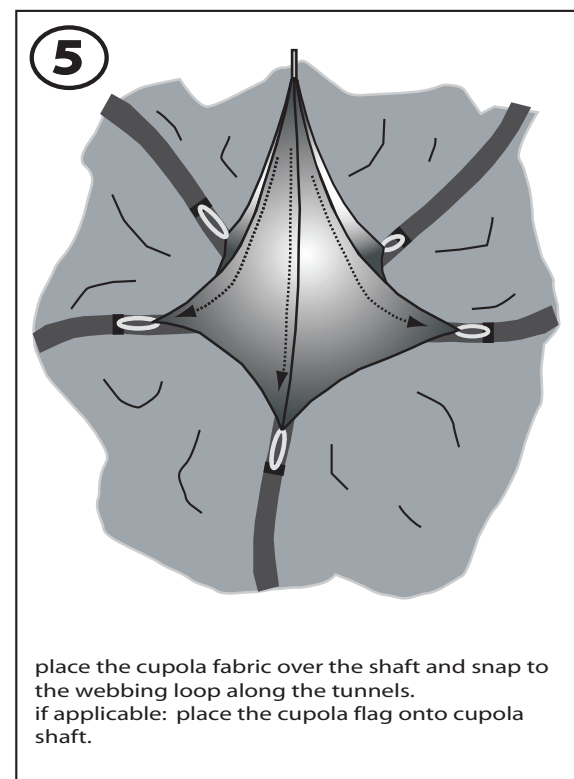
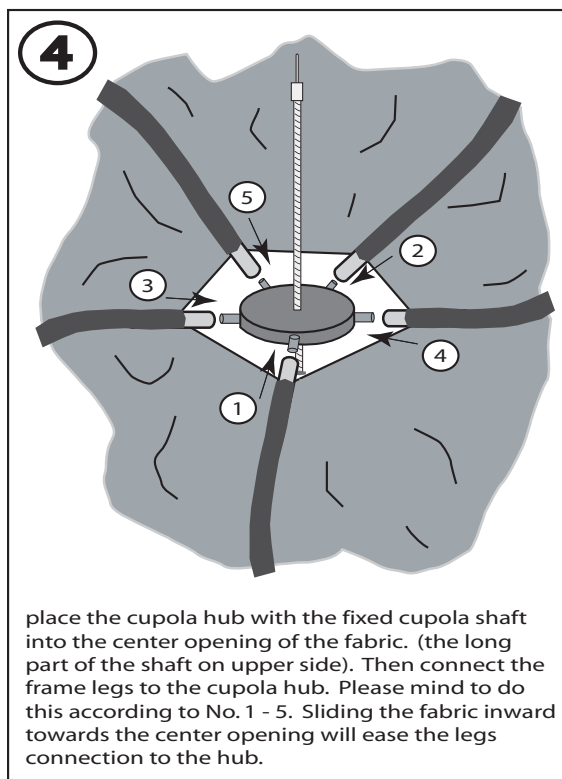
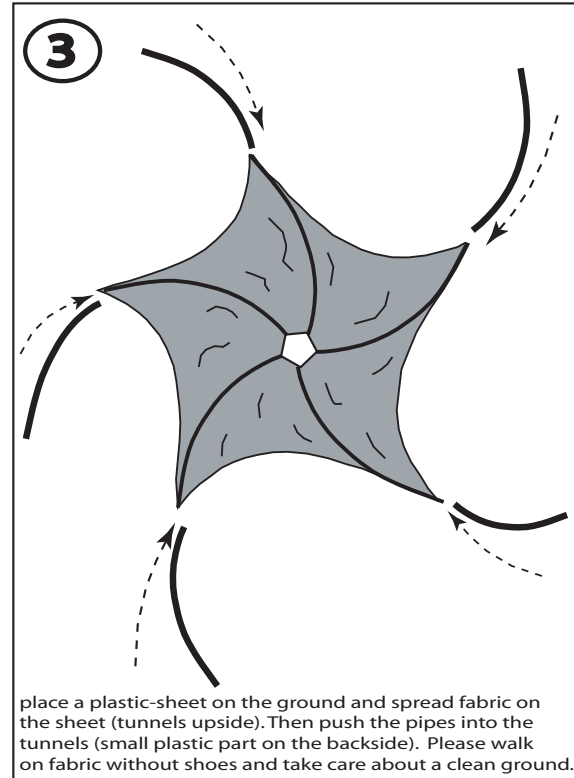
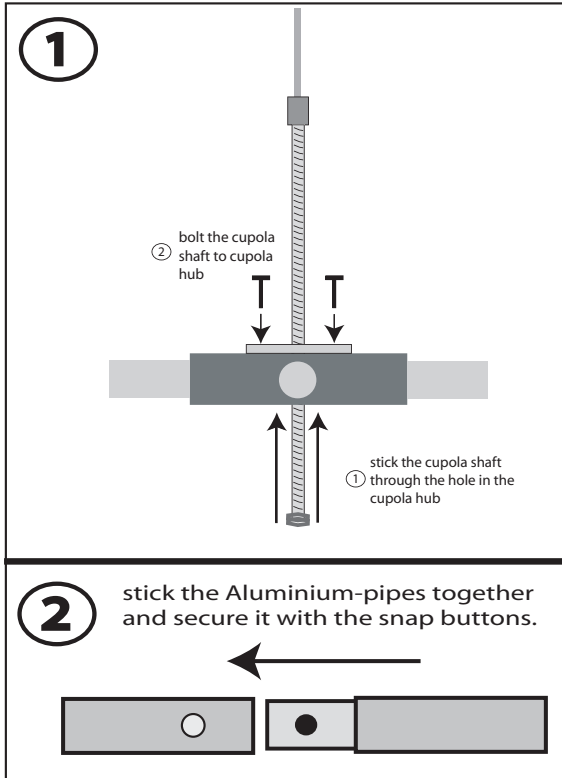
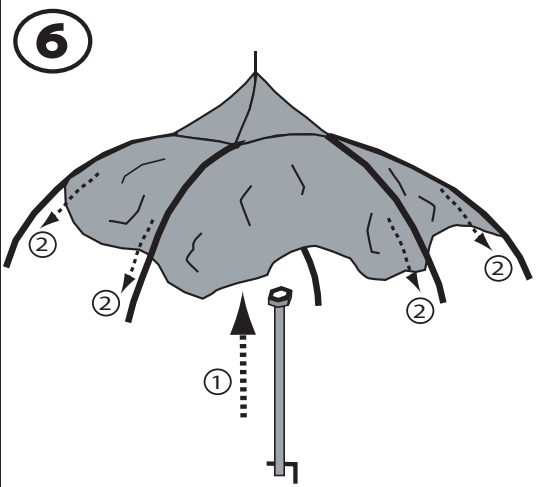


Set Up Instructions for Expodome



6

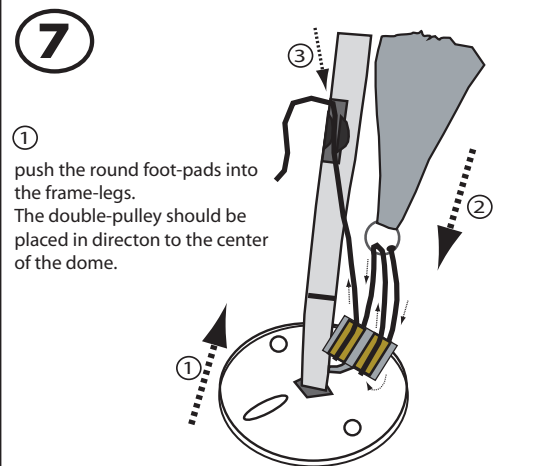


one person is going under the fabric and raise the Dome with the cupola wrench. ①

the other person(s) lift and twist the frame legs in a straight position to the center-hub and pulling the fabric down towards the ground. ②

the one person is holding the cupola-wrench as long as the Dome is stable enough to stand itself.

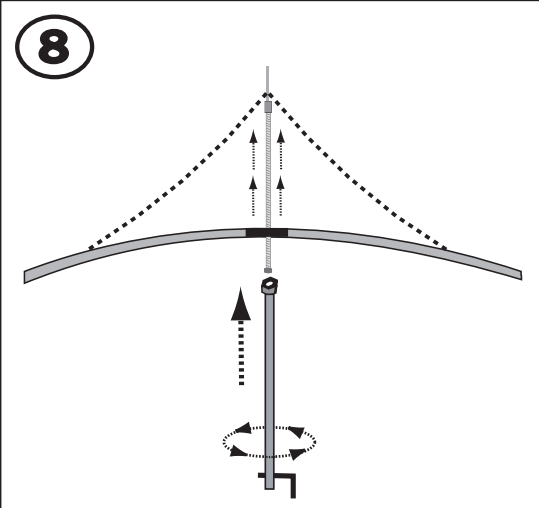
7



① push the round foot-pads into the frame-legs. The double-pulley should be placed in direction to the center of the dome.

② pull down the fabric (on the metal ring) and thread the corner ropes through the either left or right part of the pulley - after that thread the rope upwards through the metal ring and then again downwards through the second side of the pulley. Finally pull at the rope and tighten the dome "step by step" at all legs. Then thread rope into the plastic-clip ③ at the frame leg. Please ensure that all legs are tensioned equally throughout the Dome.

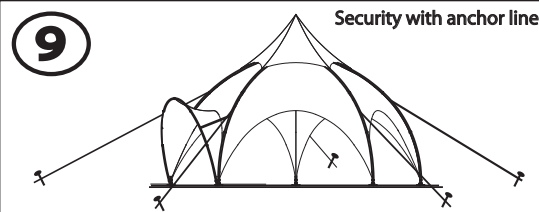
8



hold the cupola wrench to the bottom part of the cupola shaft and turn the wrench to raise the cupola until fabric becomes wrinkle free. Caution: do not over tighten !!

Then take away the wrench and check again the tension at all legs.

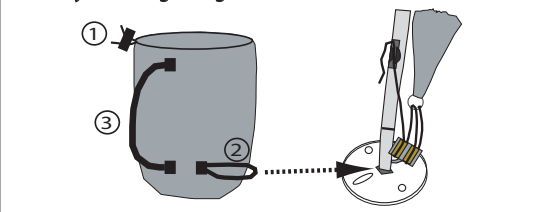
9 **Security with anchor lines**



thread the anchor lines (fixed on the tunnels) as wide as possible away from the dome and drive the stakes into the ground. Then fix the rope at the upper part of the stake. Furthermore drive the stakes through the hole at each footpad to fix the legs and secure the dome.

CAUTION! During strong winds, snow or other unusual weather conditions it is recommended to break down the Dome in order not to cause any damages on material or personal health. We cannot be responsible for any causes if these instructions are not followed! It is not a tent for 365 days/year.

Security with weight-bags



① Fill the weight-bag inlet with water/sand/stones/snow etc. and close the bag with the cord on the upper side of the bag. ①

② Then sling the velcro-part around the foot-pad and place the bag as close as possible to the footpad on the inner side of the dome. ②

③ For transportation the 4 bags can be folded and stowed in one bag for easy carrying with the shoulder strap. ③